

## 3.2 Carrera to 3.4 conversion 2004

### The brief:

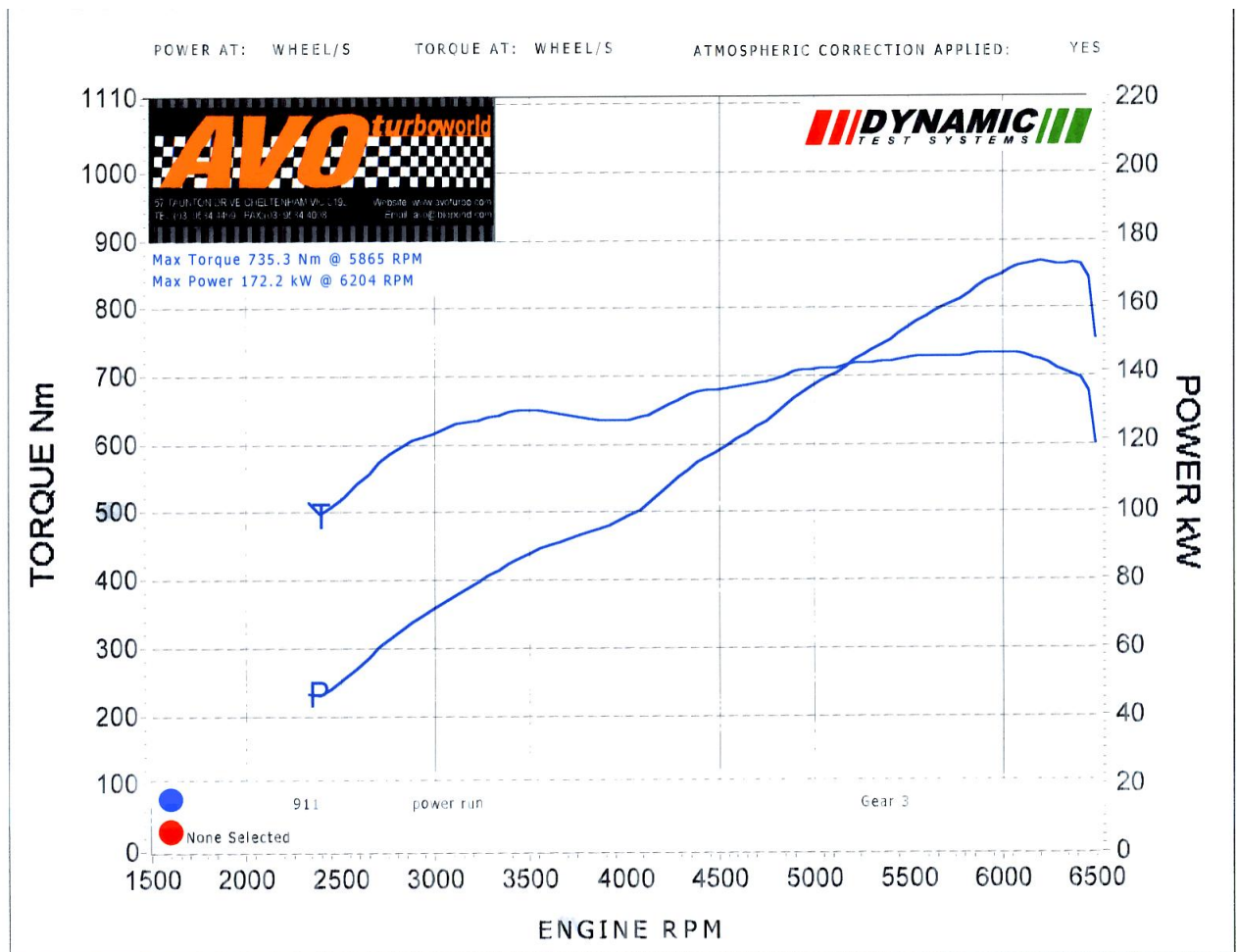
To gain as much torque as possible whilst retaining several standard features in order to comply with specific competition rules.

### Specs:

customer supplied 98mm Mahle pistons and cylinders  
original inlet manifold (internally modified to improve air flow)  
Factory Motronic ECU with custom 911Chips performance chip  
Internally polished engine block  
Reworked cylinder heads, larger stainless valves, flow-bench tested ports  
Carrera Cup Camshafts  
Sports exhaust

### The result:

Tractable & very drivable high compression engine with loads of torque and good power.



# Custom built 2.999L 911 competition engine 2002

## The brief:

To build a competition engine for tarmac rallies, retaining single plug ignition & MFI. Based on 2.7 magnesium engine case. Must run on premium pump fuel. Must be under 3.0L. Must be tractable and drivable for transport stages.

## General Specs:

Magnesium 2.7 crankcase

Spyder Automobiles custom stroked crankshaft

Customer supplied Mahle Carrera 2.8 pistons & cylinders

GE60 cams

Internally modified and polished engine block

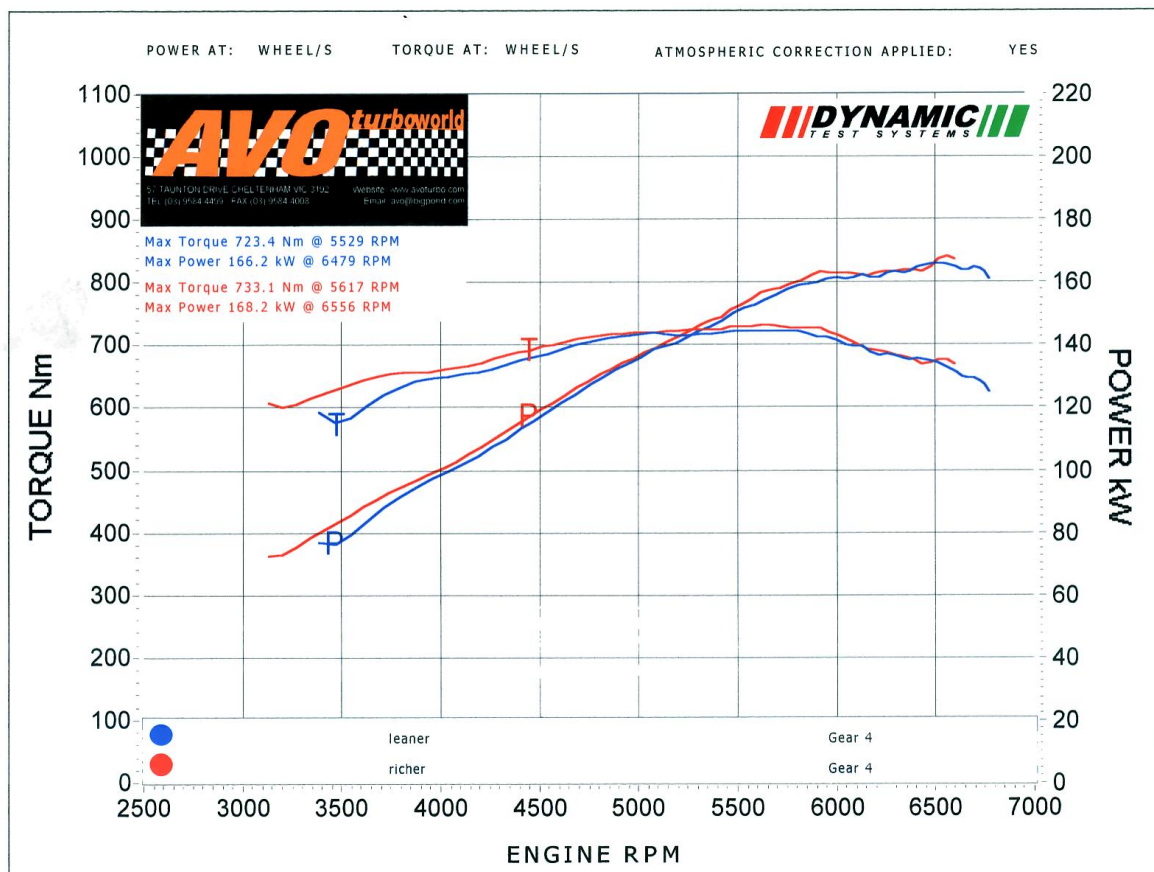
Modified heads

Modified MFI pump

11.5:1 compression

## The result:

The dyno sheet speaks for itself. Look at the torque! What a great engine this turned out to be – veteran of several tarmac rallies yielding class wins and major outright placings.



# Custom 2.4L engine 2006

## The brief:

To build a road engine for daily use and fun runs through the twisties, based on original 2.4E

## General Specs:

85mm Nickies with our custom design 10.5:1 JE pistons

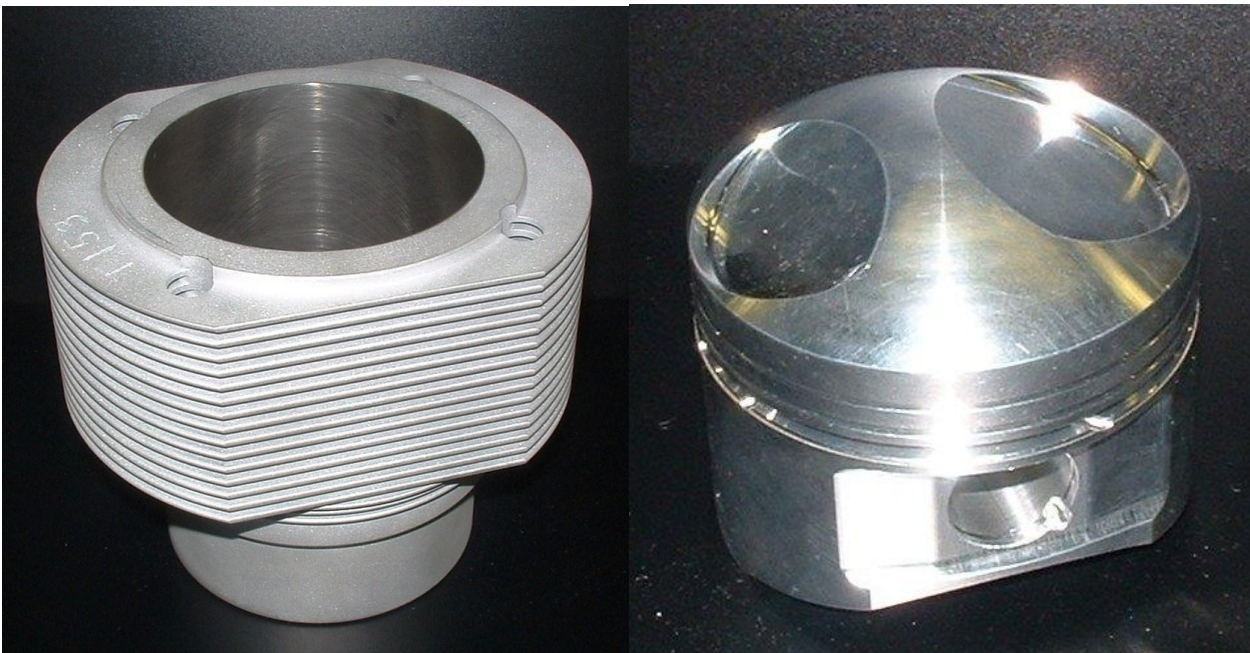
GE60 cams

Internally modified and polished engine block

Modified heads, larger valves, bench-flow tested ports

Modified MFI pump

10.5:1 compression



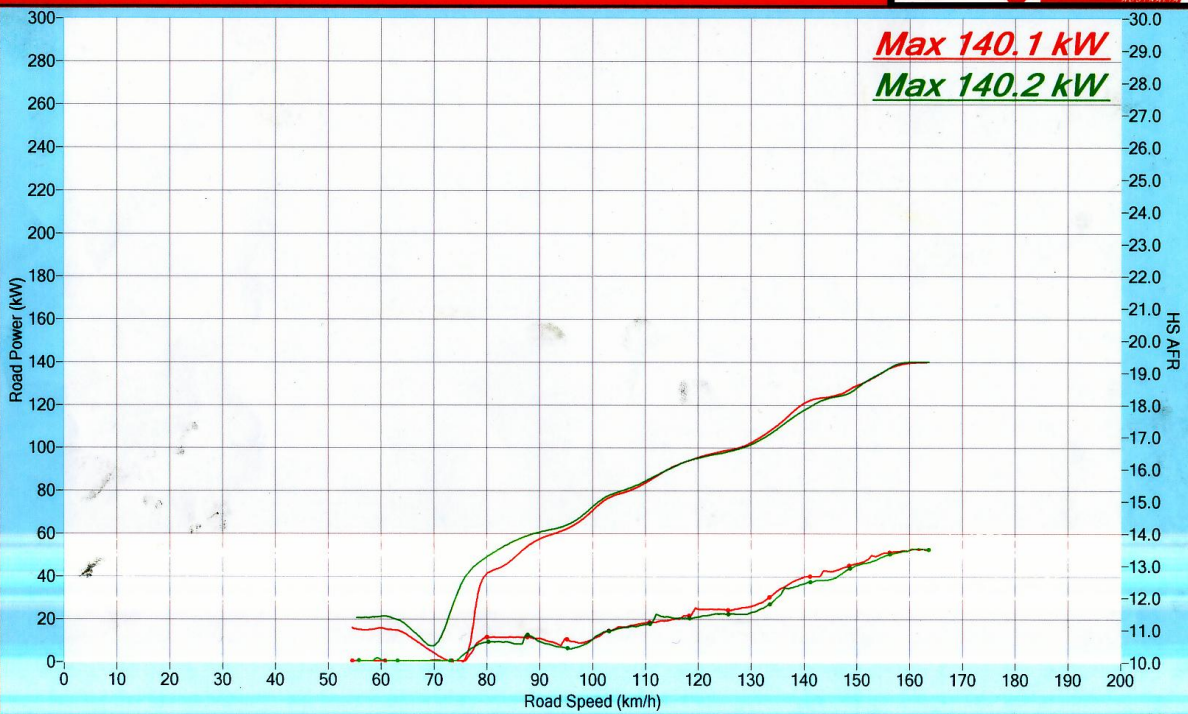
## The result:

A fast, torquey engine that will pull from 1500 revs in 4<sup>th</sup> gear all the way to redline! Like Jeckyl and Hyde, this engine is very docile in traffic and demonic through the twisties.

Speedwell Performance P/L

ID Customer SPYDER, MIKE

#263

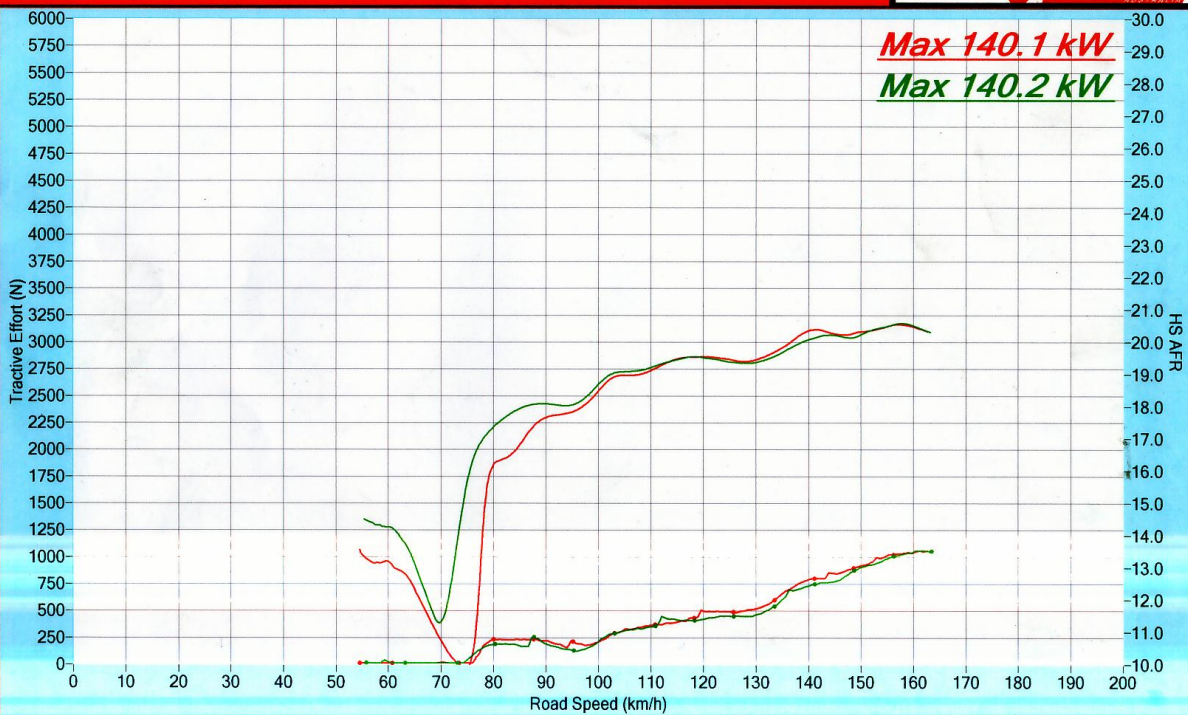


ID	Date	Time	Run	Run Description	ID	Date	Time	Run	Run Description
	07		1						
	07		2						

Speedwell Performance P/L

ID Customer SPYDER, MIKE

#264



ID	Date	Time	Run	Run Description	ID	Date	Time	Run	Run Description
	07		1						
	07		2						